

Ac. \*  
c. 8  
SW Pts.

& Edna  
tfield  
3-157  
8 Ac.  
Pt.  
3200000

Jesse & Charlene Hackney  
195-241, OR2-734  
8.63 Ac.  
SE SW Pt.  
190003260101

Joshua & Sarah  
Hackney  
OR415-416  
2.02 Ac.  
190003260103

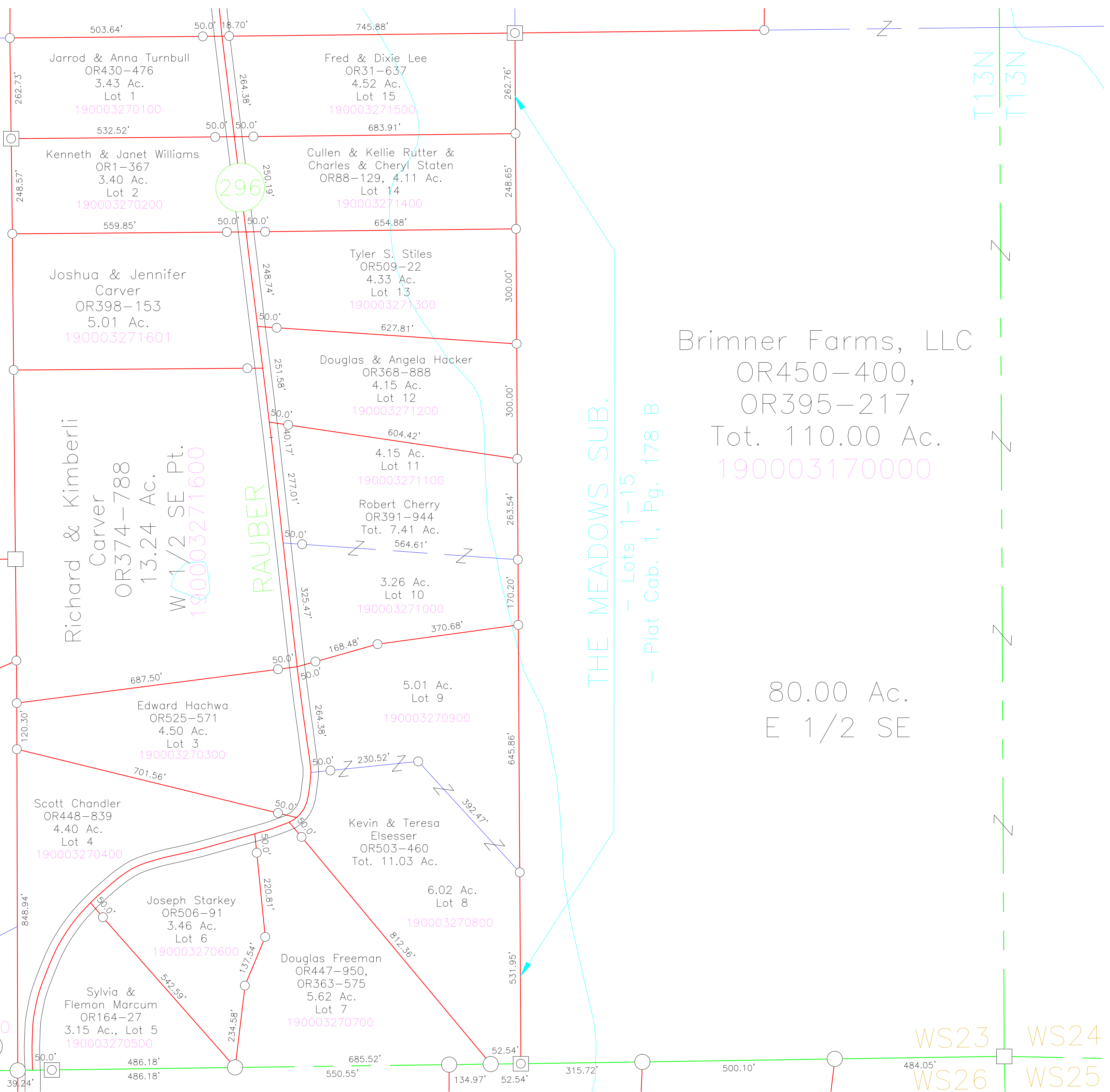
Rickey &  
Dianne Nigh  
195-241,  
OR2-732  
Tot. 13.29 Ac.  
190003260102  
10.65 Ac.  
SE SW Pt.

W Pt \*

OR27-835,  
OR2-736

190003260100  
2.64 Ac. (CT)

R17W  
D17W



Brimner Farms, LLC  
OR450-400,  
OR395-217  
Tot. 110.00 Ac.  
190003170000

80.00 Ac.  
E 1/2 SE

THE MEADOWS SUB.  
- Lots 1-15  
- Plat Cab. 1, Pg. 178 B

WS23 WS24  
WS26 WS25

T13N  
T13N