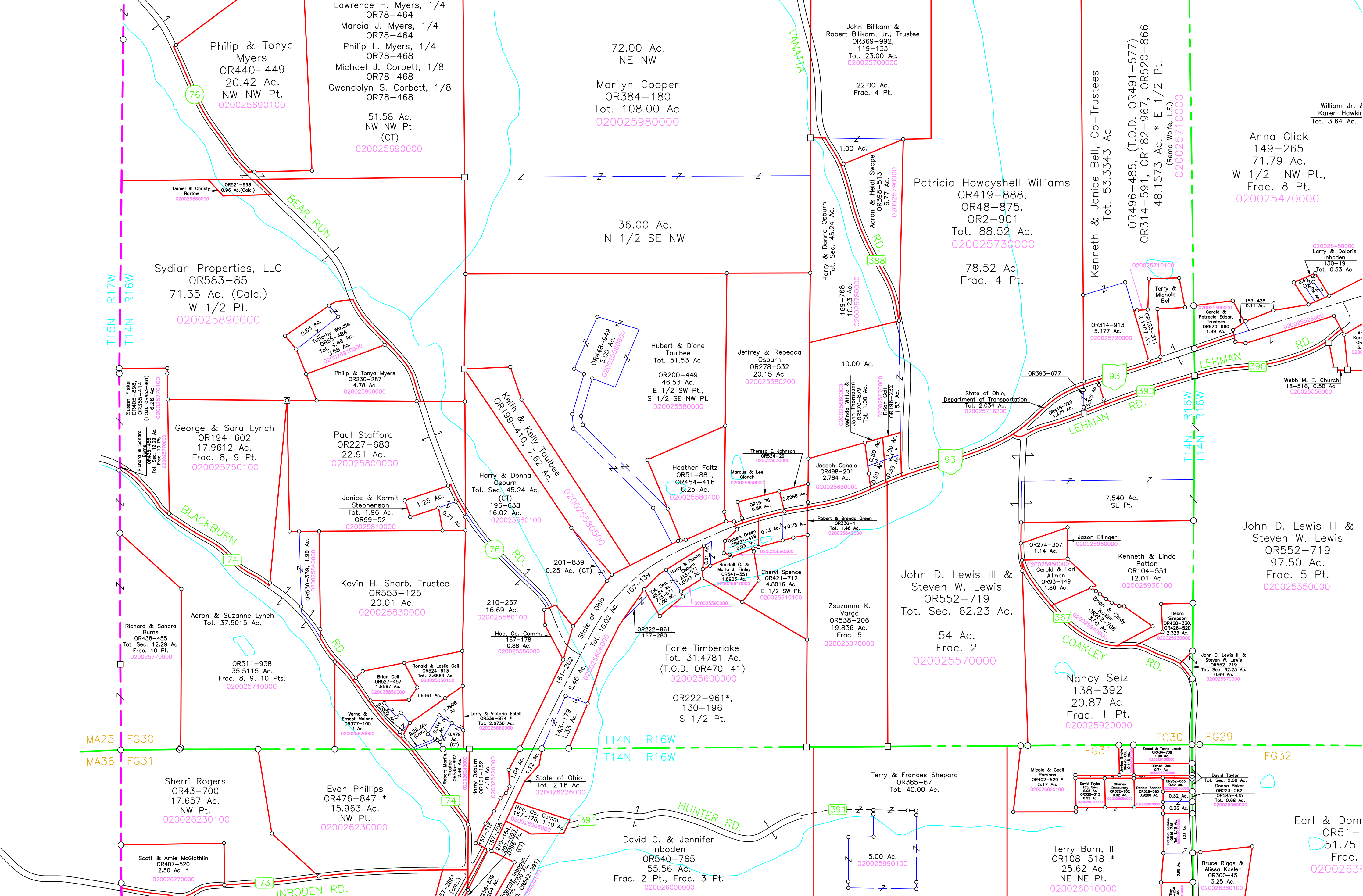


MA24 MA25 MONDAY CREEK19 PERRY COUNTY T14N R16W T14N R16W MONDAY CREEK19 MONDAY CREEK20



Philip & Tonya Myers
OR440-449
20.42 Ac.
NW NW Pt.
020025690100

Lawrence H. Myers, 1/4
OR78-464
Marcia J. Myers, 1/4
OR78-464
Philip L. Myers, 1/4
OR78-468
Michael J. Corbett, 1/8
OR78-468
Gwendolyn S. Corbett, 1/8
OR78-468
51.58 Ac.
NW NW Pt.
(CT)
020025690000

72.00 Ac.
NE NW
Marilyn Cooper
OR384-180
Tot. 108.00 Ac.
020025980000

John Blikam &
Robert Blikam, Jr., Trustee
OR369-992,
119-133
Tot. 23.00 Ac.
020025700000

22.00 Ac.
Frac. 4 Pt.

Patricia Howdysshell Williams
OR419-888,
OR48-875.
OR2-901
Tot. 88.52 Ac.
020025730000

Kenneth & Janice Bell, Co-Trustees
Tot. 53.3343 Ac.

OR496-485, (T.O.D. OR491-577)
OR314-591, OR182-967, OR520-866
48.1573 Ac. * E 1/2 Pt.
(Rema Wolfe, LE.)
020025710000

Anna Glick
149-265
71.79 Ac.
W 1/2 NW Pt.,
Frac. 8 Pt.
020025470000

William Jr. &
Karen Hawkir
Tot. 3.64 Ac.

Sydian Properties, LLC
OR583-85
71.35 Ac. (Calc.)
W 1/2 Pt.
020025890000

36.00 Ac.
N 1/2 SE NW

78.52 Ac.
Frac. 4 Pt.

George & Sara Lynch
OR194-602
17.9612 Ac.
Frac. 8, 9 Pt.
020025750100

Paul Stafford
OR227-680
22.91 Ac.
020025800000

Keith & Kelly Taubee
OR190-410, 7.62 Ac.
020025580100

Hubert & Diane
Taubee
Tot. 51.53 Ac.
OR200-449
46.53 Ac.
E 1/2 SW Pt.,
S 1/2 SE NW Pt.
020025580000

Jeffrey & Rebecca
Osburn
OR278-532
20.15 Ac.
020025580200

10.00 Ac.

State of Ohio,
Department of Transportation
Tot. 2.034 Ac.
020025715000

Terry & Michele
Bell
020025710100

Gerold &
Patricia Edgar,
Trustees
OR570-960
1.99 Ac.
020025520000

Larry & Doloris
Inboden
130-19
Tot. 0.53 Ac.

Aaron & Suzanne Lynch
Tot. 37.5015 Ac.

Kevin H. Sharb, Trustee
OR553-125
20.01 Ac.
020025830000

Harry & Donna
Osburn
Tot. Sec. 45.24 Ac.
(CT)
196-638
16.02 Ac.
020025580100

Heather Foltz
OR454-416
6.25 Ac.
020025580400

Theresa E. Johnson
OR524-29
020025580300

Joseph Canale
OR498-201
2.784 Ac.
020025680000

John D. Lewis III &
Steven W. Lewis
OR552-719
Tot. Sec. 62.23 Ac.
54 Ac.
Frac. 2
020025700000

Jason Ellinger
OR274-307
1.14 Ac.
020025960000

Kenneth & Linda
Patton
OR104-551
12.01 Ac.
020025930100

John D. Lewis III &
Steven W. Lewis
OR552-719
97.50 Ac.
Frac. 5 Pt.
020025550000

Richard & Sandra
Burns
OR438-455
Tot. Sec. 12.29 Ac.
Frac. 10 Pt.
020025770000

OR511-938
35.5115 Ac.
Frac. 8, 9, 10 Pts.
020025740000

Brian Gell
OR527-457
1.8567 Ac.
020025850000

Ronald & Leslie Gell
OR524-613
3.6361 Ac.
020025850000

Larry & Victoria Estell
OR161-152
4.18 Ac.
020025860000

Earle Timberlake
Tot. 31.4781 Ac.
(T.O.D. OR470-41)
020025600000

Zsuzanna K.
Varga
OR538-206
19.836 Ac.
Frac. 5
020025970000

Nancy Selz
138-392
20.87 Ac.
Frac. 1 Pt.
020025920000

John D. Lewis III &
Steven W. Lewis
OR552-719
Tot. Sec. 62.23 Ac.
0.69 Ac.
020025710000

Sherri Rogers
OR43-700
17.657 Ac.
NW Pt.
020026230100

Evan Phillips
OR476-847 *
15.963 Ac.
NW Pt.
020026230000

State of Ohio
Tot. 2.16 Ac.
020026226000

David C. & Jennifer
Inboden
OR540-765
55.56 Ac.
Frac. 2 Pt., Frac. 3 Pt.
020026000000

Terry & Frances Shepard
OR385-67
Tot. 40.00 Ac.

Terry Born, II
OR108-518 *
25.62 Ac.
NE NE Pt.
020026010000

Earl & Donn
OR51-
51.75
Frac.
02002631