

2
13

020006020000

James & Karen Lipp
OR488-500
(T.O.D. OR488-502)
Tot. 3.7517 Ac.
020006030000

Matthew &
Joanie Gedeon
OR342-572
10.40 Ac.
SW SW Pt.
020006060000

217-403
.43 Ac. (CT)

William Brooks
Tot. 8.93 Ac.
020006130000

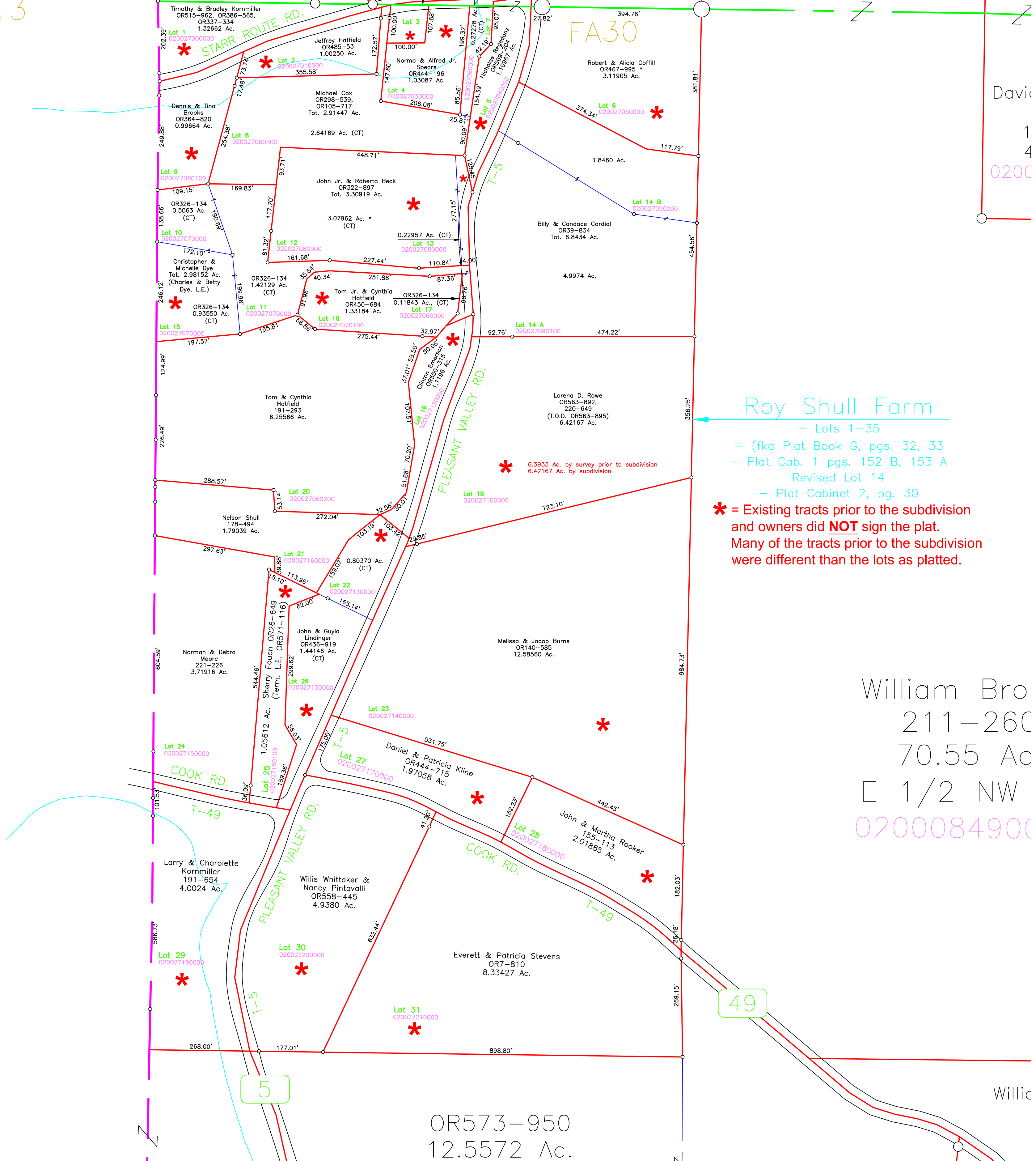
211-290
8.50 Ac. (CT)

Davi
1
E
020

Davi
1
4
0200

FA19

FA30



Roy Shull Farm
 - Lots 1-35
 - (fka Plat Book G, pgs. 32, 33
 - Plat Cab. 1 pgs. 152 B, 153 A
 Revised Lot 14
 - Plat Cabinet 2, pg. 30

* = Existing tracts prior to the subdivision
 and owners did **NOT** sign the plat.
 Many of the tracts prior to the subdivision
 were different than the lots as platted.

William Bro
 211-260
 70.55 Ac
 E 1/2 NW
 0200084900

OR573-950
 12.5572 Ac.

Willic