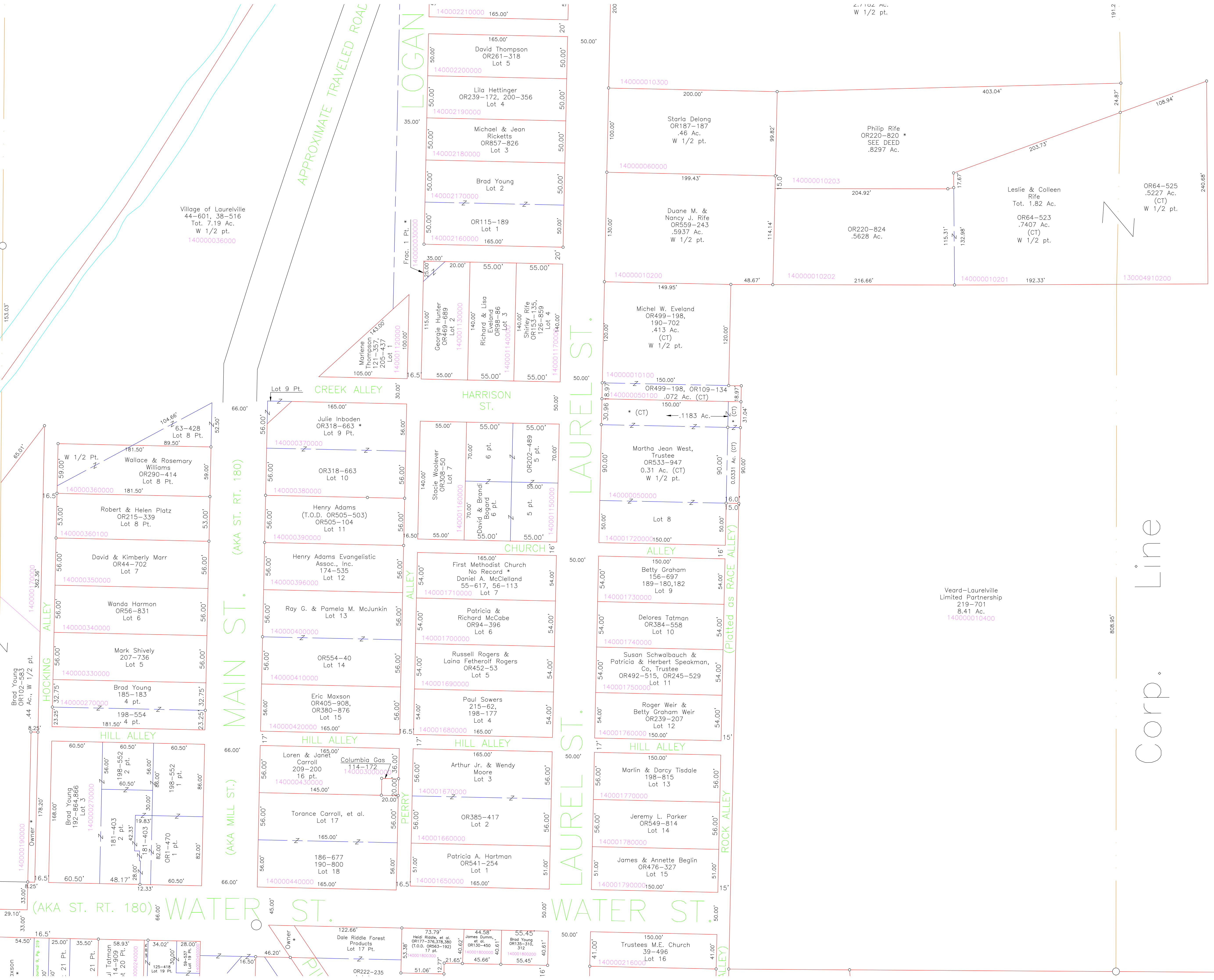


80

PICKAWA

Line



Corp. Line

2.7102 Ac.  
W 1/2 pt.

191.2

808.95'

153.03'

332.36'

178.20'

33.00'

29.10'

54.50'

33.00'

16.5'

33.00'

29.10'

54.50'

33.00'

29.10'

54.50'

33.00'

29.10'

54.50'

33.00'

29.10'

54.50'

33.00'

29.10'

54.50'

33.00'

29.10'

54.50'

33.00'

29.10'

54.50'

33.00'

29.10'

54.50'

33.00'

29.10'

54.50'

33.00'

29.10'

54.50'

33.00'

29.10'

54.50'

33.00'

29.10'

54.50'

33.00'

29.10'

54.50'

33.00'

29.10'

54.50'

33.00'

29.10'

54.50'

33.00'

29.10'

54.50'

33.00'

29.10'

54.50'

33.00'

29.10'

54.50'

33.00'

29.10'

54.50'

33.00'

29.10'

54.50'

33.00'

29.10'

54.50'

33.00'

29.10'

54.50'

33.00'

29.10'

54.50'

33.00'

29.10'

54.50'

33.00'

29.10'

54.50'

33.00'

29.10'

54.50'

33.00'

29.10'

54.50'

33.00'

29.10'

54.50'

33.00'

29.10'

54.50'

33.00'

29.10'

54.50'

33.00'

29.10'

54.50'

33.00'

29.10'

54.50'

33.00'

29.10'

54.50'

33.00'

29.10'

54.50'

33.00'

29.10'

54.50'

33.00'

29.10'

54.50'

33.00'

29.10'

54.50'

33.00'

29.10'

54.50'

33.00'

29.10'

54.50'

33.00'

29.10'

54.50'

33.00'

29.10'

54.50'

33.00'

29.10'

54.50'

33.00'

29.10'

54.50'

33.00'

29.10'

54.50'

33.00'

29.10'

54.50'

33.00'

29.10'

54.50'

33.00'

29.10'

54.50'

33.00'

29.10'

54.50'

33.00'

29.10'

54.50'

33.00'

29.10'

54.50'

33.00'

29.10'

54.50'

33.00'

29.10'

54.50'

33.00'

29.10'

54.50'

33.00'

29.10'

54.50'

33.00'

29.10'

54.50'

33.00'

29.10'

54.50'

33.00'

29.10'

54.50'

33.00'

29.10'

54.50'

33.00'

29.10'

54.50'

33.00'

29.10'

54.50'

33.00'

29.10'

54.50'

33.00'

29.10'

54.50'

33.00'

29.10'

54.50'

33.00'

29.10'

54.50'

33.00'

29.10'

54.50'

33.00'

29.10'

54.50'

33.00'

29.10'

54.50'

33.00'

29.10'

54.50'

33.00'

29.10'

54.50'

33.00'

29.10'

54.50'

33.00'

29.10'

54.50'

33.00'

29.10'

54.50'

33.00'

29.10'

54.50'

33.00'

29.10'

54.50'

33.00'

29.10'

54.50'

33.00'

29.10'

54.50'

33.00'

29.10'

54.50'

33.00'

29.10'

54.50'

33.00'

29.10'

54.50'

33.00'

29.10'

54.50'

33.00'

29.10'

54.50'

33.00'

29.10'

54.50'

33.00'

29.10'

54.50'

33.00'

29.10'

54.50'

33.00'

29.10'

54.50'

33.00'

29.10'

54.50'

33.00'

29.10'

54.50'

33.00'

29.10'

54.50'

33.00'

29.10'

54.50'

33.00'

29.10'

54.50'

33.00'

29.10'

54.50'